



CHAANDRAI

GALAXY

2 & 3 BHK Spacious Homes  
Nilgiri Chowk, Ambegaon

LIVE EXCEPTIONAL



NOT JUST A STAR.







BE THE SHINING STAR.





SHINE





# LIKE A STAR.

What do you see when you look at night sky? Well, you might see the darkness, but what you seek is light.

And that's what the stars are for. So, how about owning a shining star for yourself, while you are surrounded by stars, as bright as you.

Welcome to Chandrai Galaxy where you

Shine like a star.









# SHINING STAR ON AMBEGAON'S SKYLINE

That's right! Chandrai Galaxy at Nilgiri Chowk doesn't just give you a star-studded living experience, it makes you a star of the neighbourhood.

With eye-catching residential tower, homes with sparkling designs, amenities that gift you a glittering lifestyle and a shining location, it has every urban delight you seek.

All you need to do is come home to Chandrai Galaxy.





# STARS OF THE GALAXY

At Chandrai Galaxy, stars align perfectly to light up your everyday life. And the glow is so beautiful that even the neighbours will admire it for a lifetime.

2 & 3 BHK SHINING APARTMENTS

122 APARTMENTS THAT SHAPE THE GALAXY

11 STOREY RESIDENTIAL TOWER

3 STOREYS OF MODERN COMMERCIAL SPACES

15+ AMENITIES ON GROUND LEVEL & ROOFTOP









INDOOR PLANNING



# MORE SHINE FOR EACH STAR

Your home at Chandrai Galaxy is a star by itself. It lights up your life with multi-dimensional indoor comforts.

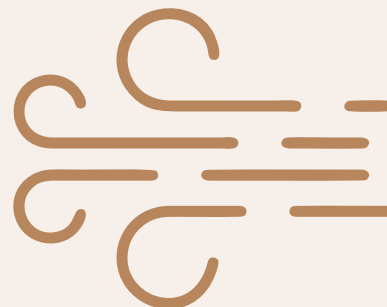
From well-lit and well-ventilated homes to Vastu-compliant planning and indoor spaces that nurture privacy and togetherness, you get everything you ever wanted.



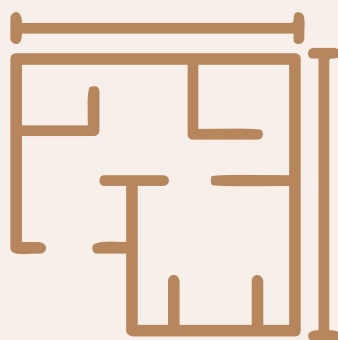




NATURAL  
LIGHT



AIR  
CIRCULATION



EVERY SQUARE  
METER USED



HOME  
WITH A VIEW



VASTU  
COMPLIANT









AN ADDRESS THAT  
SHINES ALL AROUND











STEP INTO A  
GALAXY OF  
SHINING LIFESTYLE







A STAR-STUDDED  
WELCOME  
MADE FOR YOU







AMENITIES



# MORE SPARKLE BEYOND FOUR WALLS

At Chandrai Galaxy, the living experience is not limited to within four walls. With a like-minded community for company, the address offers a wide range of lifestyle amenities.

Spread across ground and rooftop levels, these amenities have something for everyone in the family. Take a look.





SWIMMING POOL  
WITH INFINITY EDGE



BABY POOL



MULTIPURPOSE  
PLAY COURT



ACUPRESSURE  
TRACK



SEATING WITH  
PERGOLA



WALKING  
TRACK



PARTY LAWN



BARBEQUE  
COUNTER



TEMPLE



GAZEBO WITH  
CONNECTING BRIDGE



YOGA AND  
MEDITATION AREA



JOGGING TRACK



CHILDREN'S  
PLAY AREA



AMPLE SEATING AREA



BASKETBALL  
COURT



OPEN GYM



LEISURE AREA



ATTRACTIVE  
WATER BODY



BOARD GAME AREA



TABLE TENNIS



STAR GAZING DECK



SENIOR CITIZEN SITOUT



TRICYCLE TRACK



BADMINTON COURT



CHILL OUT AREA





GALAXY LIVING







WHERE PEACE  
OF MINDSHINES  
THROUGHOUT





SPACES FOR  
THE STARS TO  
SHINE TOGETHER















A ROOFTOP  
THAT SHINES  
WITH SPARKLING  
AMENITIES





## 2 BHK CUT SECTION







# 3 BHK CUT SECTION



GALAXY LIVING







4 BHK  
CUT SECTION

BOTTOM







4 BHK  
CUT SECTION

TOP



GALAXY LIVING







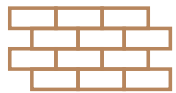
SPECIFICATIONS



# WHERE STARS ALIGN PERFECTLY

Every star here is shaped with specifications that further enrich and elevate the sparkle for a lifetime.





### STRUCTURE & MASONRY

- Earthquake resistant RCC frame structure
- 5" thick AAC Block work internally & externally
- External wall sand faced plaster
- Internal wall gypsum finish over cement plaster & ceiling in gypsum finish



### ELECTRICAL

- Adequate electrical points in all rooms, concealed copper wiring with MCB
- Electrical provision of split A/C point in All bedrooms
- TV point in living room and master bedroom with DTH cabling work
- Exhaust fan points provision in kitchen and toilet
- Water purifier point provision in kitchen
- Washing machine point provision in dry balcony
- Invertor point provision
- Video door phone



### FLOORING

- Vitrified tile flooring in each flat
- Dado tile up to lintel level in all toilets
- Ceramic flooring in toilets, terrace and dry balcony
- Chequered tiles / trimix in parking areas



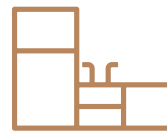
### PAINTINGS, GRILLS & RAILINGS

- Oil bond distemper for all internal walls
- Apex paints for all external wall
- Oil Painted MS safety grills
- MS railing for terrace



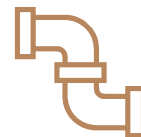
### WINDOWS

- Granite window frame for all windows
- 3 Track powder coated aluminium sliding windows with Mosquito mesh & louvered windows for toilets
- MS grills for windows



### KITCHEN

- White Marble platform with stainless steel sink
- Dado tiles up to lintel level
- Separate waterline for drinking & domestic water



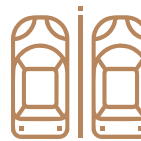
### PLUMBING

- Concealed plumbing in CPVC pipes
- Branded make CP fittings in kitchen & toilets
- Branded bathroom sanitaryware fittings
- Provision of washing machine point in dry balcony (inlet & outlet)
- Brick Bat / chemical double coat water proofing in toilets, terrace & dry balcony
- Provision for geyser point in toilets
- Solar water for common toilet



### DOOR & DOOR FRAME

- Attractive doors with premium quality fittings and fixtures
- Powder coated French door in terrace



### PARKING

- Electric point for EV Cars Charging



### FIRE FIGHTING

- Firefighting system with sprinkler and smoke detector in all Rooms as approved by Fire Department of PMC



### LIFT

- Branded Automatic lift with DG backup



### WATER SOURCE

- PMC (Civil Authority), Borewell



GALAXY CONNECTIONS



ANANDVAN



ROYAL HERITAGE MALL



KATRAJ LAKE



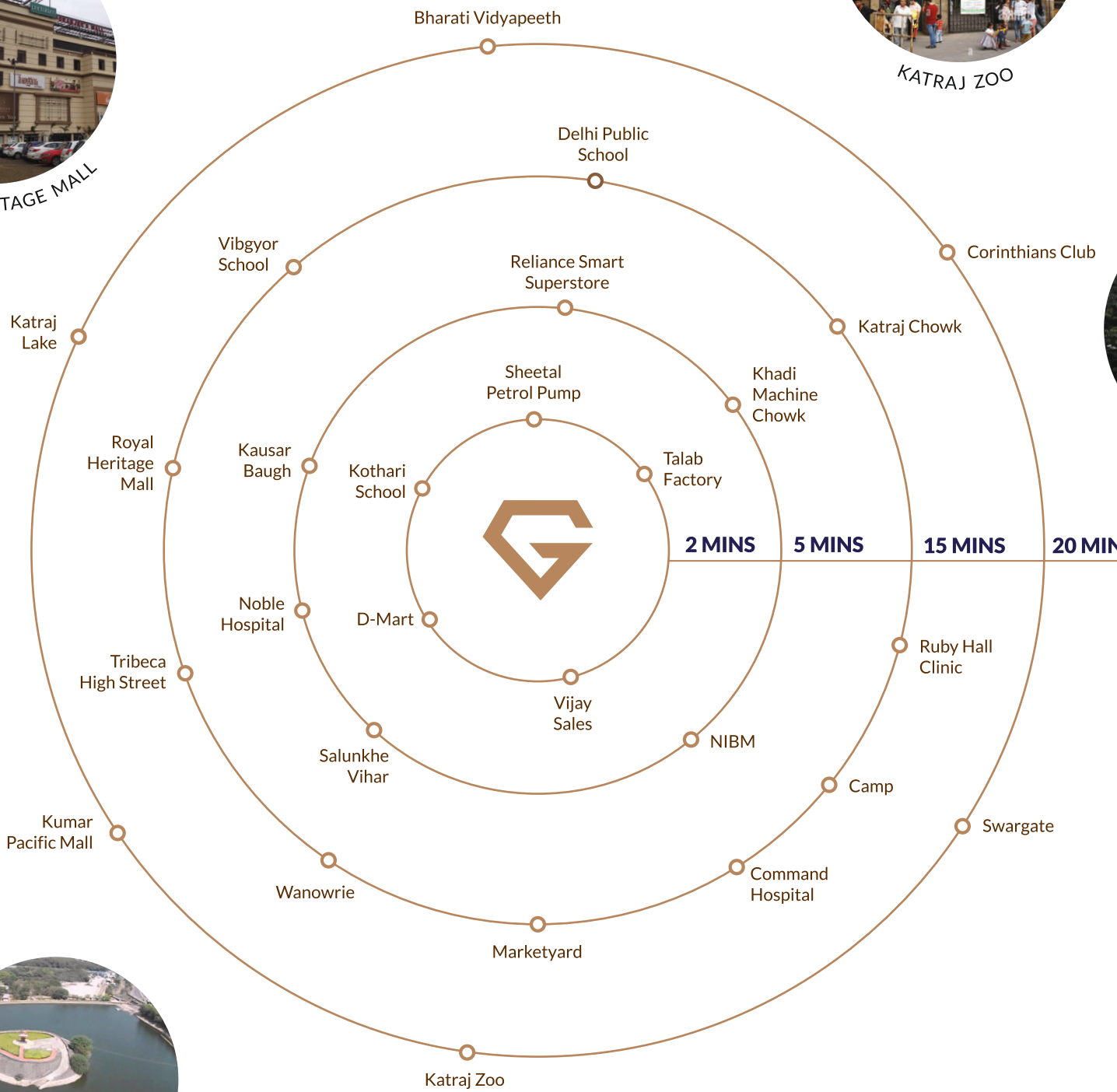
CORINTHIANS CLUB



KATRAJ ZOO



TRIBECA HIGHSTREET







CAMP

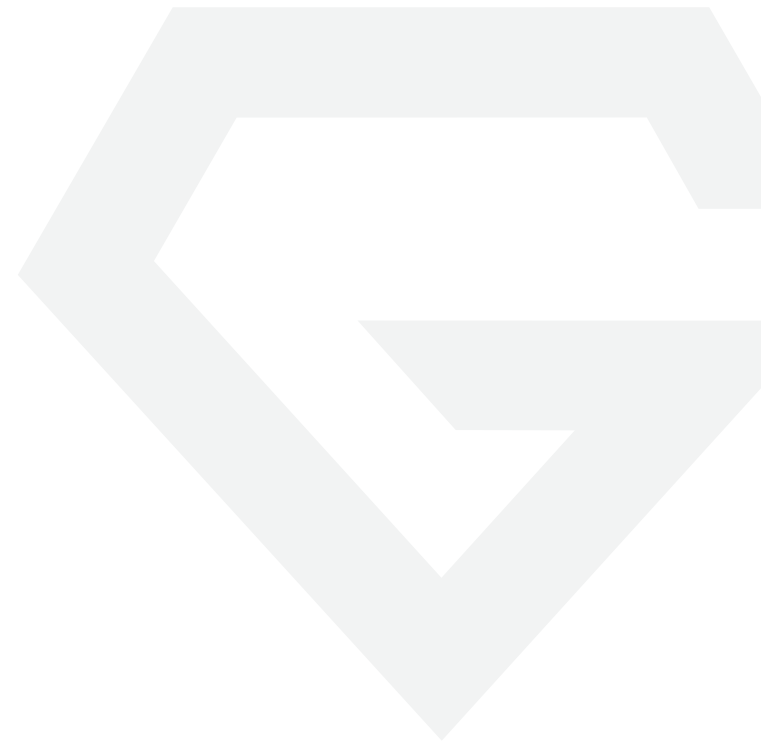
NS



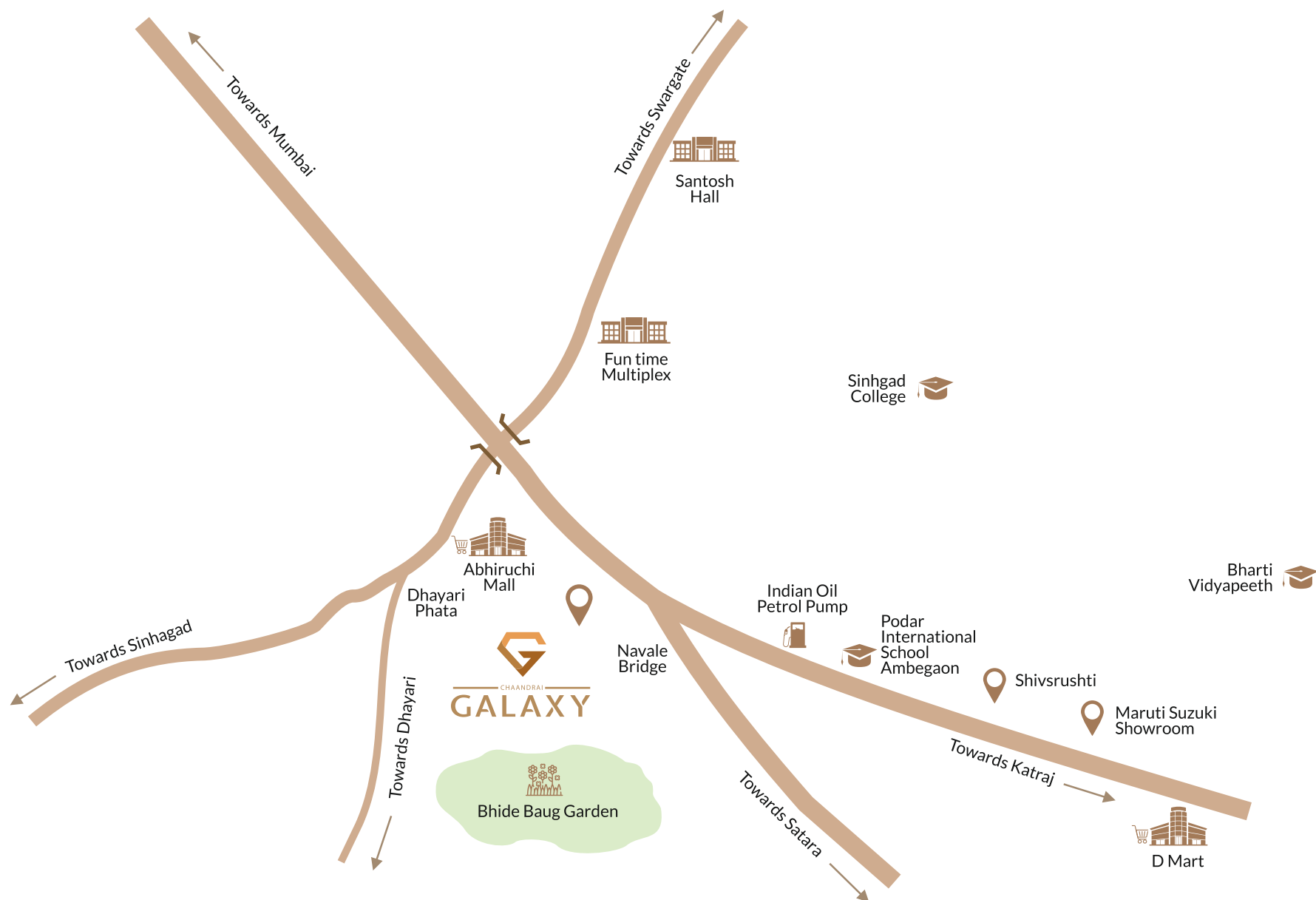
# LET YOUR CONNECTIONS SHINE

At Chandrai Galaxy, you enjoy life at a location that is excellently connected all around. Here, you become a part of a galaxy of unmatched connectivity.

From kids to adults and the elderly, everyone will find destinations of their choice, close by.







NEAR TO EVERYWHERE



#### SCHOOLS & COLLEGES

Vision School	- 3.6 Km
Poddar International School	- 3.7 Km
Pawar Public School	- 4.4 Km
Sinhgad College	- 3.4 Km
JSPM College	- 3.9 Km
Aryans School	- 3.9 Km
Orchid School	- 3.1 km



#### RETAIL & ENTERTAINMENT

Abhiruchi Mall	- 2.1 Km
Katraj Dairy	- 6.3 Km
Chhatrapati Shivaji Raje Natyagruh	- 3.0 Km
Kumar Pacific Mall	- 7.2 Km
PI Deshpande Udyan	- 6.4 Km
Zapurza Museum	- 16 Km
Rajiv Gandhi (Katraj) Zoo	- 6.1 Km
Bhide Baug Garden	- 0.7 Km
Shivrushti	- 2.5 Km
Sarasbaug	- 9.1 Km



#### MAJOR LANDMARKS

Swaminarayan Temple	- 3.0 Km
Katraj Chowk	- 4.7 Km
Upcoming Metro Station	- 2.0 Km
Swargate	- 11 Km
ISKCON Temple	- 7.7 Km
Khadakwasala Dam	- 8.6 Km
NH 4 Highway	- 0.5 Km
Sinhgad Road	- 2.0 Km
Taljai Hills	- 7.4 Km



#### HOSPITALS

Deenanath Mangeshkar Hospital	- 5.6 Km
Jagtap Hospital	- 2.3 Km
Navale Hospital	- 2.5 Km





**CHAANDRAI  
CONSTRUCTION**

TRUSTED NAMES,  
GLORIOUS RECOGNITIONS,  
MEANS ABSOLUTE ASSURANCE.



Chaandrai Constructions and Siddhi Landmarks are two of southern Pune's most reputed brands. And although we have won awards from Times Property and Lokmat for our flagship creations, the true testament to our excellence is the love of over 5,000+ home-buyers in 50+ projects.

Our legacy of 25 years is well-reflected in the spaces we create for our customers. Quality, commitment, passion and dedication are the four pillars that make our name stand tall in the industry. And now, Veleentina is yet another offering where we bring to you an Absolute Experience of prestige, luxury and peace.



## CREDITS



### LEGAL

Adv. Nitin Waghmode



### ARCHITECT

Parvez Jamadar & Associates



### RCC CONSULTANT

Gensys Technologies Pvt. Ltd.



### BRAND CONSULTANT

Clean Slate Advertising



**CHAANDRAI  
CONSTRUCTION**

**SALES LOUNGE:** Sr. No. 16/1A, Kondhwa Main Road, Near Vijay Sales, Kondhwa 411 048. ☎ **84466 21583**

**CORPORATE OFFICE:** Chaandrai Group of Companies, Sr. No. 34/5, Bharati Vidyapeeth,  
Ambegaon Bk., Pune - 411 046. ☎ 020 24365959 | [www.chaandraiconstruction.com](http://www.chaandraiconstruction.com)

Disclaimer: This brochure is for internal purpose only and contains artistic impressions and stock images for illustrative purpose and no warranty is expressly or impliedly given that completed development will comply in any degree with such artist's impression as depicted. All specification of the flat and project amenities shall be as per the final agreement between the parties. Recipients are advised to use their discretion in relying on the information/amenities described /shown therein. T&C in the Registered agreement will be binding to the customer.



**Registration**  
**No: P52100052985**  
[maharera.mahaonline.gov.in](http://maharera.mahaonline.gov.in)